

A photograph of a hospital hallway. In the foreground, a man in blue scrubs is pushing a gurney with a patient. In the background, a nurse in white scrubs and another person in blue scrubs are walking. A patient is seated in a wheelchair. The hallway has white walls, a light-colored floor, and recessed ceiling lights. A large, semi-transparent red triangle is overlaid on the left side of the image.

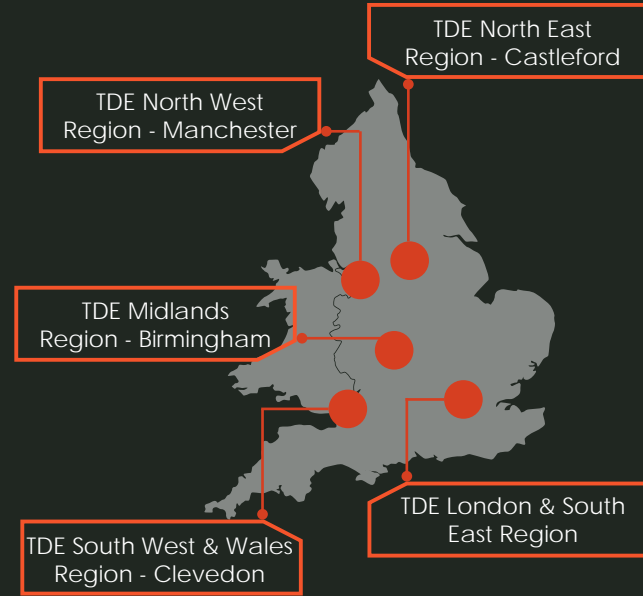
Healthcare

INTRODUCTION

Tilbury Douglas Engineering (TDE) is one of the top building services companies, operating in the public and private sectors in the UK and internationally.

We offer advice, cost planning, design, buildability advice, and commissioning of services for society's infrastructure. We have a gross revenue below £100 million and a workforce of over 250 people uk-wide.

- Since the inception of NHS England's - ProCure Framework in 2003 we have been a PSCM on **ProCure21, ProCure 21+ and ProCure 22** supporting a number of the PSCP's
- We have also been a supply chain partner on all four iterations of the **Welsh Government's Designed for Life Building for Wales 1, 2, 3 and 4 Frameworks**
- In partnership we have delivered over **£400m+ (MEP value) of healthcare schemes** some NHS Trust relationships spanning over 10 years
- We are members of the **P22 EPP Standard Components Programme for MEP** which has saved NHS Trusts over £22m to reinvest in clinical healthcare
- The **first Proton Beam Therapy Unit** to be built in the UK was delivered by us
- During Covid19, we delivered **1200 critical care beds within 9 installation days** at the NEC in Birmingham in addition to several other schemes across the UK
- We are currently involved in over **£60m (MEP value) of Stage 3 Preconstruction agreements** on P22 and DfL schemes.
- Our largest healthcare contract is the **£49m (MEP Value) Prince Charles Hospital Redevelopment** in Merthyr Tydfil which is currently being delivered



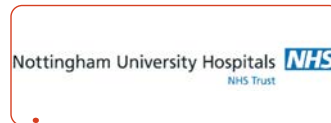
HEALTHCARE PARTNERSHIPS

Long-term NHS Trust partnerships

Our growth in the health sector has been achieved through our reputation for delivering even the most challenging projects on time, and on budget. We pride ourselves on having many clients with whom we deliver repeat projects for and we value those relationships as the bedrock of our business.



10 years
12 projects



4 years
4 projects



9 years
5 projects



7 years
5 projects

Partnering Principal Contractors

We pride ourselves on delivering an exceptional offering from Pre-Construction support through to project delivery and aftercare. We develop relationships with organisations and practices that value our profession and share our passion to bring innovation and ingenuity at work to life. Examples of our successful relationship to name:



- Proton Beam Therapy Unit
- Leicester A&E
- RILD Devon & Exeter



- New Cross A&E
- Aconbury Hospital
- Stafford Hospital re-configuration



- Project Fitzroy, Secure Adolescent Mental Health Unit
- Birmingham Dental Hospital



- Elekta Research and Development Facility



- Walsgrave Hospital
- UCLAN Nightingale
- Edward Street MHU Dormitory Eradication

FRAMEWORKS - A DECADE OF PARTNERSHIP

Tilbury Douglas Engineering has been a Preferred Supply Chain Member since the inception of both NHS England's - ProCure Framework and NHS Wales' - Designed for Life Healthcare Framework supporting the construction of over £10bn worth of healthcare projects to date.



Designed for Life: Building for
Wales 1



Designed for Life: Building for
Wales 2



Designed for Life: Building for
Wales 3

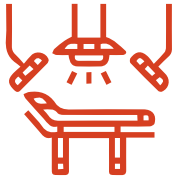


Adeiladu GIG i Gymru
NHS Building for Wales

Designed for Life: Building for
Wales 4



THEATRES



Experienced
delivery in:

UCV,
interoperative,
hybrid,
robotic &
general



Bradford Royal
Infirmary ENT
£1.6m (M&E)



Chorley Day Case
Theatres
£2.5m (M&E)



Wythenshawe
Theatres
£2.1m (M&E)



Queen Elizabeth Hospital
- Theatre Refurbishment
£3.5m (M&E)



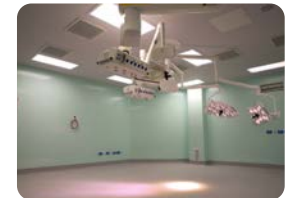
Leighton Hospital
Theatres
£8.5m (M&E)



Prince Charles Hospital
Theatres
£2.0m (M&E)



Nottingham City Hospital -
Orthopaedic Theatres
£4.0m (M&E)



The Walton Centre
Intraoperative MRI Theatre
£1.8m (M&E)

DIAGNOSTICS



Experience
in
**complex
interfaces**
with
specialist
diagnostic
providers



Walsgrave Hospital
CT Scanner
£0.7m (M&E)



County Hospital Stafford
MRI
£0.7m (M&E)



Leicester Emergency Department –
CT Scanner
£0.9m (M&E)



ASI Medical –
CT & MRI Diagnostic Suites
£3.0m (M&E)



Liverpool Heart
& Chest
£4.7m (M&E)



Rutherford Cancer Treatment –
CT & MRI Diagnostic Suites
£5.3m (M&E)

WARDS



Delivered
over **20**
wards for
8 Trusts in
5 years



Bradford Hospital
Wards 10, 2 and 5
£3.6m (M&E)



QE/Good Hope/Heartlands
- Ward Upgrades
£4.7m (M&E)



Guy's and St Thomas
Cancer Wards
£3.9m (M&E)



Royal Preston Hospital -
Ribblesdale Ward
£1.0m (M&E)



Royal Preston Hosp. Ward
5 Conversion
£0.45m (M&E)



P22 Birmingham Childrens
Hospital - R Block Ward 15
£1.0m (M&E)



County Hospital
Stafford
£4.3m (M&E)



Leighton Ward 6
Refurbishment
£1.0m (M&E)

EMERGENCY CARE



Delivered UK's
**first 'Frailty
Friendly'**
emergency
department

Majority of
Emergency
Departments
**remained
fully
operational**



Walsall Manor Hospital
Emergency Department
£9.9m (M&E)



Aintree Emergency
Department Upgrade
£4.5m (M&E)



Walsgrave Emergency
Department Refurbishment
£4.4m (M&E)



Wythenshawe Emergency
Department Upgrade
£4.3m (M&E)



Leicester Royal Infirmary
Emergency Department
£7.7m (M&E)



Yeovil Hospital Emergency
Department Reconfiguration
£1.0m (M&E)



Bangor A&E
Department
£4.0m (M&E)



New Cross Accident &
Emergency Department
£5.8m (M&E)

CANCER CARE



Delivered
UK's **first**
Proton
Beam
Therapy
Unit



Christie Proton Beam
Therapy Unit
£21.0m (M&E)



Christie Cancer Treatment
(Treatment / YOU / Brachytherapy)
£9.3m (M&E)



Rutherford Cancer Treatment
Centre
£5.3m (M&E)



QE Chemotherapy
Wards
£1.0m (M&E)

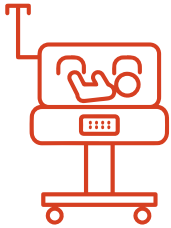


Shrewsbury Cancer Treatment
Centre
£1.3m (M&E)



Colchester Radiotherapy
Centre
£3.9m (M&E)

PAEDIATRICS



Delivered
critical
paediatric
care
upgrades
within **fully**
operational
facilities



Birmingham Women's
& Children's
£9.8m (M&E)



Liverpool Women's Neonatal
Intensive Care
£4.6m (M&E)



Liverpool Women's
Walk in Centre
£3.0m (M&E)



Royal Bolton Hospital –
Paediatrics
£0.1m (M&E)



Kettering Maternity
Theatres
£1.4m (M&E)



Refurbishment Special Care
Baby Unit, Yeovil
£2.0m (M&E)

COMMUNITY



Provision of
the **highest
quality**
'one stop
shop' **local
community**
healthcare
facilities



Catterick Integrated
Care Centre
£15.5m (M&E)



Cardigan Integrated
Care Centre
£2.8m (M&E)



Prince Charles Hospital -
Outpatients Department
£49.0m (M&E)



Calderdale
Hub
£1.0m (M&E)



Malvern Community
Hospital
£3.0m (M&E)



St Charles Community
Hospital, London
£3.0m (M&E)

MENTAL HEALTH



Delivered over
**520 mental
health beds**
in secure
environments



St Andrews Project Fitzroy
CAMHS
£10.9m (M&E)



Roseberry Park
MHU
£2.5m (M&E)



Langdon Medium
Secure Unit
£4.5m (M&E)



Yardley Medium
Secure Unit
£5.5m (M&E)



Moseley Hall Mental
Health Unit
£3.6m (M&E)



Rochdale Low Secure
MHU
£2.2m (M&E)

INFRASTRUCTURE



Energy
Efficient **Zero**
Carbon
Solutions

All
infrastructure
upgrades
undertaken
with **zero**
distruption
to operations



Prince Charles Hospital
Electrical, LTHW, CHW
£49.0m (M&E)



Prestwich Hospital - M&E
Infrastructure Upgrades
£0.3m (M&E)



Good Hope & Heartlands
Infrastructure Works
£0.4m (M&E)



Airedale Hospital – HV/LV
Upgrades
£0.4m (M&E)



Christie Hospital – AHU
Replacements
£0.3m (M&E)



County Hospital Stafford
AHU Replacements
£0.6m (M&E)



Yeovil Hospital – Lighting,
Fire Alarm, IPS/UPS
£2.0m (M&E)



County Hospital Stafford
Domestic Water & AHU
£0.8m (M&E)

RAPID RESPONSE

NEC Nightingale



450 Employees
and operatives



13
days to
deliver



20,921m of
bed bays laid
end to end



86,000+
Hours worked



NEC
Nightingale
Value Confidential



NHS Nightingale Ward
UCLAN Preston
£0.7m (M&E)



Walsall Winter Pressure Emergency
COVID Assessment Units
£0.7m (M&E)



Royal Preston Hospital –
Ward 5 COVID Isolation
£0.5m (M&E)



Epsom & St Helier University
Hospital Rapid Works
£0.2m (M&E)



Yeovil Hospital COVID
Response Works
£0.5m (M&E)

MAINTAINING SERVICES IN A LIVE ENVIRONMENT



Delivered over **£200m** maintaining services in a live environment



Over half of our healthcare projects are refurbishment schemes, delivered within a live environment.

We understand the importance of maintaining continuity of service throughout our works and plan our works accordingly. We have undertaken complex refurbishment programmes at;



St Georges Hospital
£4.0m



Prince Charles Hospital,
£49.0m



Liverpool Neo-natal
£4.6m



Stafford County Hospital,
£11.0m



Yeovil District Hospital,
c£7.5m



Nottingham Uni Hospital,
£2.3m

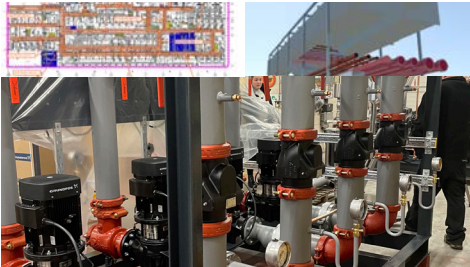


QE Theatres Birmingham,
£3.0m



Leighton Theatres,
£8.0m

MMC



Walsall Manor Hospital Emergency Department

Examples include 80 corridor service modules, pre-fabricated skidded plant, conlock conduit system (12,000m), 30 pre-wired distribution boards.



Leighton Hospital Theatres:

Delivered one of the largest modular plant rooms in the UK. At 1,730m² the plant room consisted of 25 modules, each 14 mtrs long by 3 mtrs high. We saved £50k, reduced the programme by 3 months.



Nottingham City Hospital Cystic Fibrosis Unit:

- 22 modules manufactured and tested in 56 hours
- 1km of M&E services installed on site in 45 hours



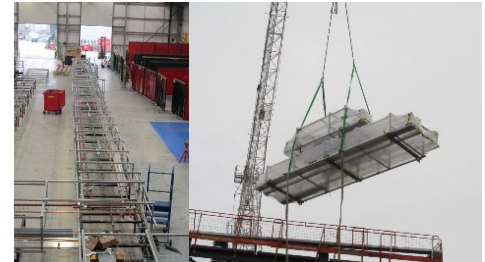
Christie Proton Beam Therapy:

Off site manufacturing achieving 50% labour savings by using pre-fabricated plant rooms, pipe stools, skidded plant and installing 6m pre-fab modules containing 4Km of pipe work and containment.



Roseberry Park Mental Health Unit:

Pre-Serviced containment skids units built on site (by TDE) in readiness for Primary walls.



Birmingham Children's Hospital

2D and 3D back to back services modules were installed including low temperature hot water pipework, chilled water, LV tray, power and lighting trunking, data basket and domestic water services.

ACCOLADES AND TESTIMONIALS

A number of our clients projects have been nominated and secured awards. Delivering an excellent product is what motivates us at Tilbury Douglas Engineering – receiving recognition from our industry endorses our quality and commitment.

Building Awards 2020 'Proud to Help' - NEC Nightingale Hospital

Building Better Healthcare 2018 - ProCure Project Winner - for the UK's first high-energy proton beam therapy centre (already included though so probably not worth it)

Constructing Excellence NWCA 2019 'Project of the Year' - Wythenshawe Hospital Emergency Department

Constructing Excellence National Awards 'Project of the Year' - The Christie Proton Beam Therapy Centre

Built in Quality Awards - Birmingham Childrens Hospital (Best Public Building)

RoSPA Order of Distinction - 21 consecutive Annual Golds Award for Health and Safety

IHEEM BIM Initiative - The Christie Proton Beam Therapy Centre

H&V News 2022 - Bradford Teaching Hospital NHS FT, Programme of Works' Project of the Year shortlisted Finalist



GUIDING OUR CLIENTS TO SUSTAINABLE HEALTHCARE SOLUTIONS



REDUCED NHS
TRUST'S ENERGY
BILLS BY CIRCA
£600K PER AN-
NUM



Tilbury Douglas Engineering have an enviable track record in providing best value delivery across a range of energy efficient healthcare schemes; varying in size, value and complexity.

We can implement, maintain and improve your energy usage in accordance with ISO 50001 by energy benchmarking, energy reports, energy audits and energy led facilities management.

Our positive environmental impact

- Reduced carbon emissions by 22.2%
- Reduced construction waste by 56%
- Reduced water usage by 19%



ENERGY EFFICIENCY IN HEALTHCARE

County Hospital Stafford

University Hospitals of North Midlands

- Annual energy reduction of 141,075 kWh saving £11k per annum compared to the existing ward areas
- Reduction in annual CO2 emissions by 63.4t
- 56% reduction in energy use and CO2 emissions



Sid Watkins Neuro-rehabilitation Centre

The Walton Centre NHS Foundation Trust

- Fabric first approach
- Reduced carbon emissions by 30%
- £3m-£5m saving in energy over 25%
- Preferred solution improved building fabric U values by 20%, reducing heat loss through the fabric by 40% and energy demand by 15%; making a £3m-£5m in energy over 25 years



Christie Cancer Care Centre

The Christie NHS foundation trust

- Reduced installed load by 28.61 kW saving 112,000 kWh per year
- 600 man hours per annum reduction for lamp changes
- £75,000 reduction in lamp costs over LED life





The projects at County hospital have been some of the most challenging undertaken in a 'live' environment. Completing £30m worth of development whilst maintaining full NHS services at County Hospital, required a different approach. The skills of each stake holder were harnessed and used to deliver this scheme and the integrated team approached delivered each project with compassion and discretion, always putting the needs of patient groups first. I would like to say a big thank-you to every one of you who has played a role in being part of this success for UHNM.

Dave Ruscoe
Senior Project Manager
University Hospital of North Midlands NHS Trust



I wanted to take the time to say how impressed we are with the management of the phase 2 site. With the current Covid situation it was great to see you and the team have successfully initiated and maintain a safe working environment and practices on site to allow the work to continue. I underwent an induction on Tuesday and again was taken through all measures and safety advice on the floor, again very much impressed.

Jack Norkett
Project Manager, ASI Medical



Contact:

Edward Halford - Business Development Director
Tilbury Douglas Engineering Limited
Mobile: 07483 319048
Email: edward.halford@tilburydouglas.co.uk

Tilbury Douglas Engineering Limited

T3 Building, Trinity Park, Birmingham, B37 7ES
Telephone: 0121 782 2727
www.tilburydouglas.co.uk